



The

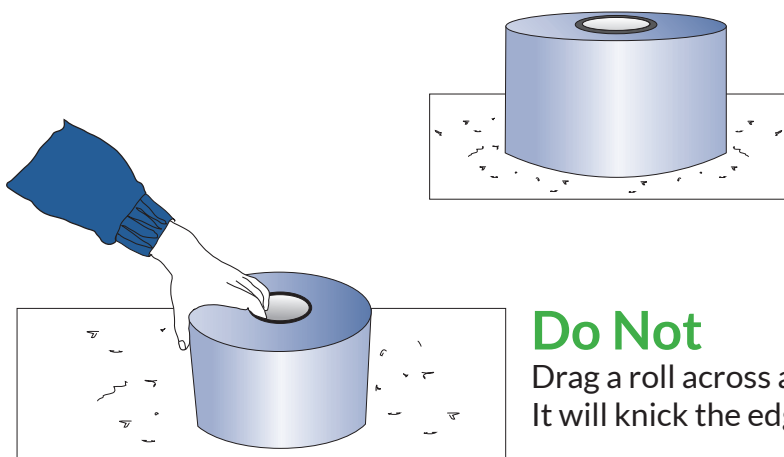
Stock Doctor

with helpful tips from your manufacturer

Issue 1

"Plagued with web breaking problems? Handling of material before use is probably your culprit. Self-wound film products can take a lot of abuse but cannot withstand a "knick" on the side. Once the film's edge is damaged, the material will definitely break when being processed."

Preventative Maintenance



Do Not

Drag a roll across a table.
It will knick the edges.

Never

Lay a roll of self-wound on its side without a protective paper underneath.



Do Not

Cut rolls through shrinkwrap
when unpacking.

Do Not

Bump a roll's edge when
placing it on a mandrel.



Do Not

Transport unprotected rolls with
a hand cart. The bottom roll may
be damaged by the cart or floor.

